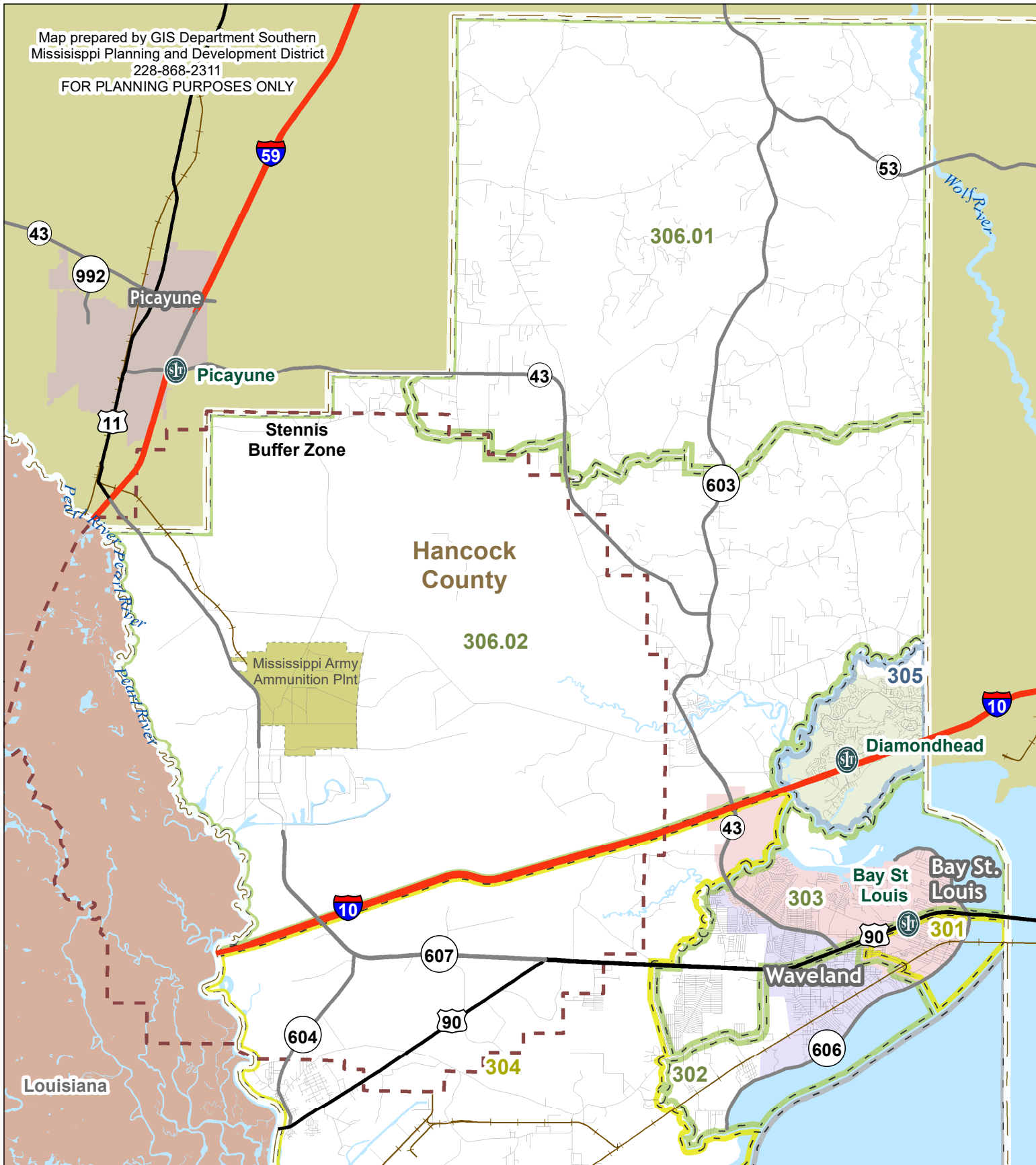
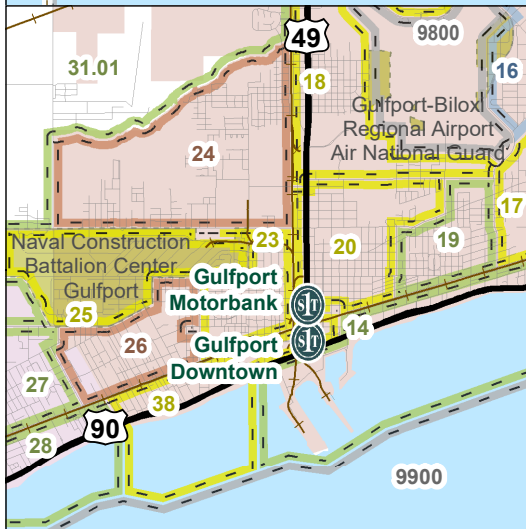
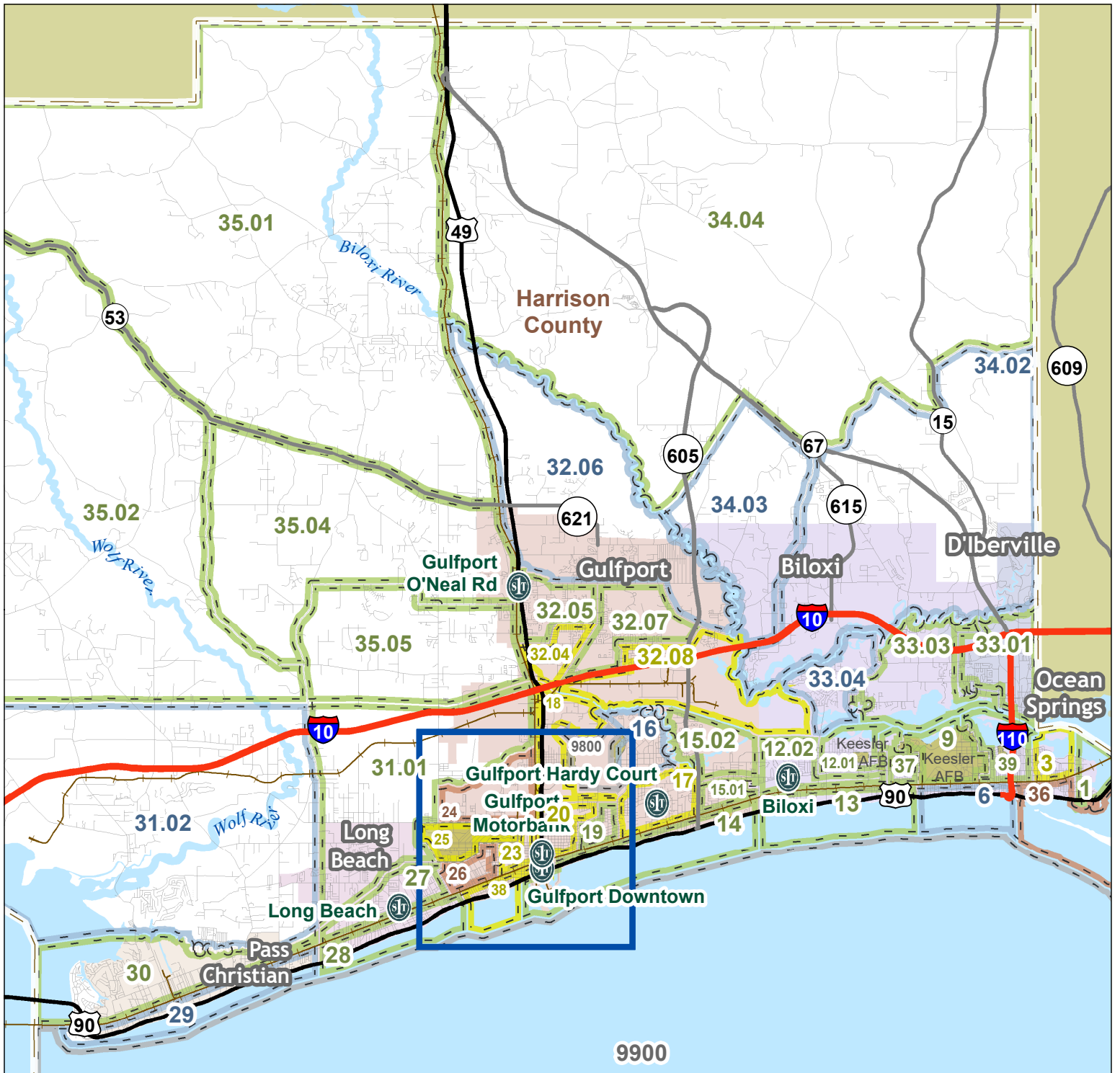


Map prepared by GIS Department Southern Mississippi Planning and Development District
228-868-2311
FOR PLANNING PURPOSES ONLY



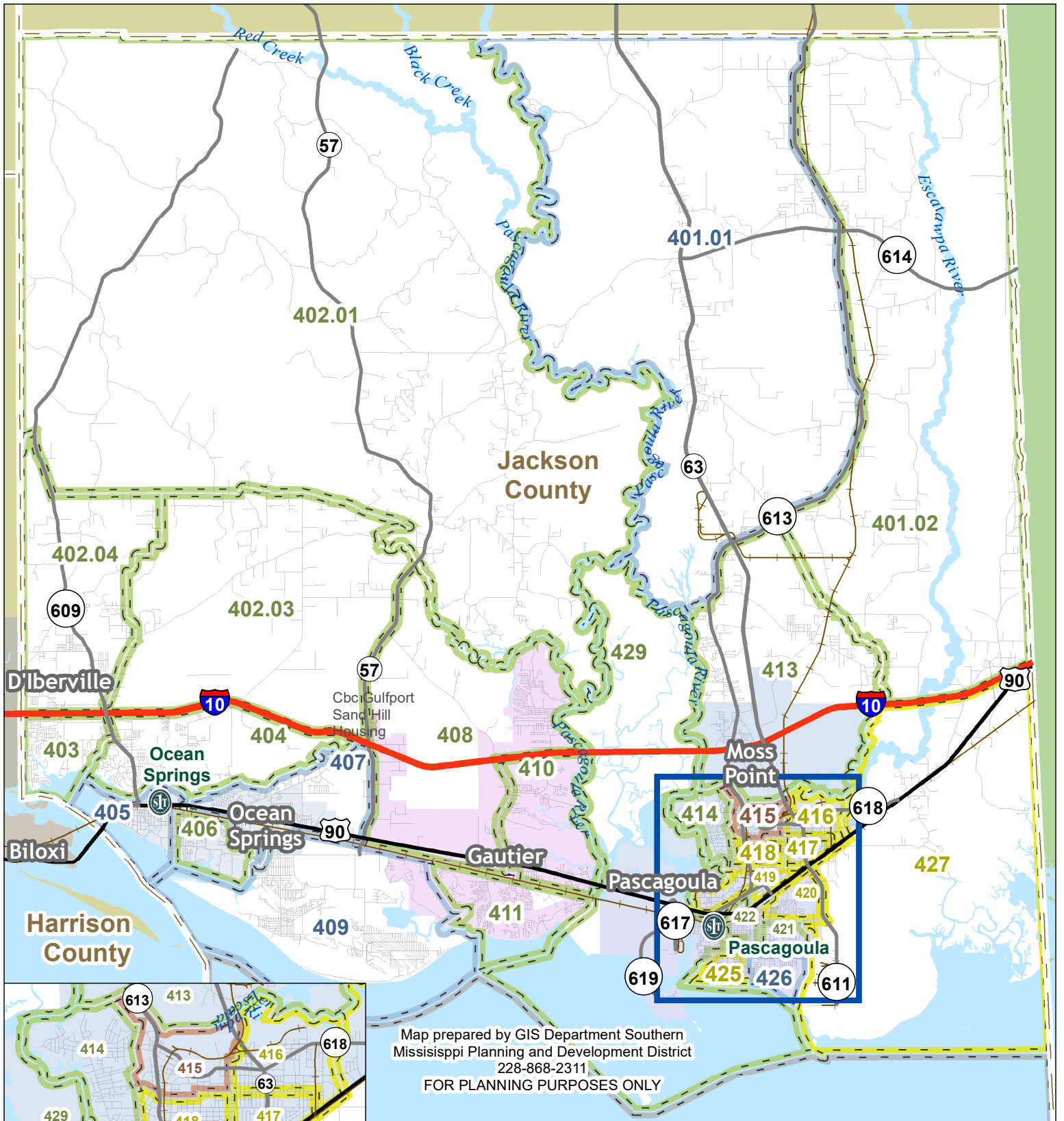
Interstate Highway	Railroad	Census Tracts 2016 FFIEC Income Level	Middle ($\geq 80\%$ and $< 120\%$)	N
State Highway	County Boundary		Upper ($\geq 120\%$)	
Federal Highway	Water	Low ($< 50\%$)	Unknown	0 3 Miles
Roads	The First	Moderate ($\geq 50\%$ and $< 80\%$)	TheFirst A NATIONAL BANKING ASSOCIATION	



Map prepared by GIS Department Southern Mississippi Planning and Development District
228-868-2311
FOR PLANNING PURPOSES ONLY

	Interstate Highway		Railroad
	State Highway		County Boundary
	Federal Highway		Water
	Roads		The First
		0 3 Miles	
		<p>Census Tracts 2016 FFIEC Income Level</p> <ul style="list-style-type: none"> Low (<50%) Moderate (>=50% and <80%) Middle (>=80% and <120%) Upper (>=120%) Unknown 	

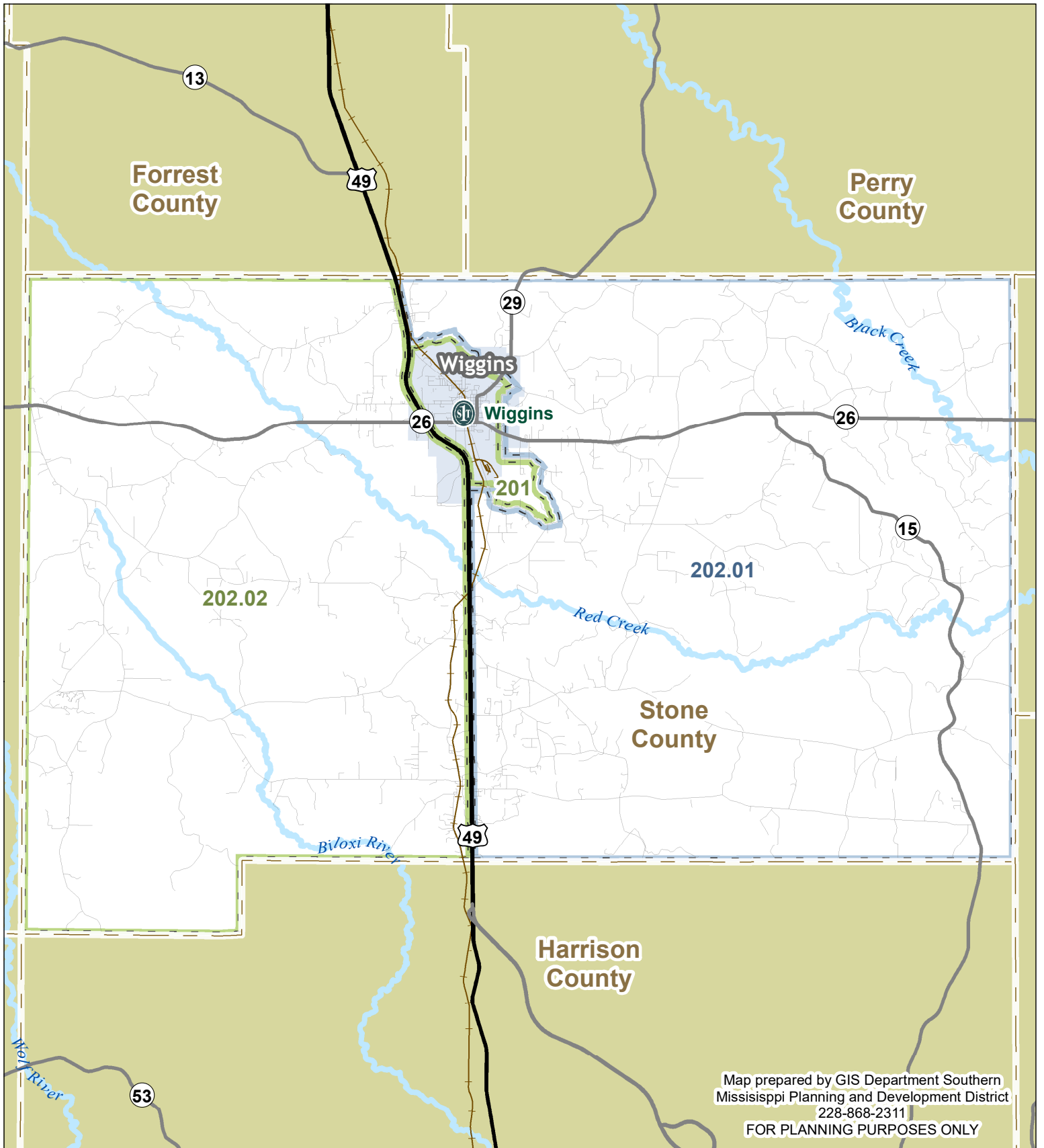




	Interstate Highway		Railroad
	State Highway		County Boundary
	Federal Highway		Water
	Roads		The First

Census Tracts 2016 FFIEC Income Level

	Low (<50%)
	Moderate (>=50% and <80%)
	Middle (>=80% and <120%)
	Upper (>=120%)
	Unknown



Map prepared by GIS Department Southern
 Mississippi Planning and Development District
 228-868-2311
 FOR PLANNING PURPOSES ONLY

Interstate Highway	Railroad	Census Tracts		Middle ($\geq 80\%$ and $< 120\%$)
State Highway	County Boundary	2016 FFIEC Income Level		Upper ($\geq 120\%$)
Federal Highway	Water	Low ($< 50\%$)	Moderate ($\geq 50\%$ and $< 80\%$)	Unknown
Roads	The First			

N
 0 3
 Miles

TheFirst
A NATIONAL BANKING ASSOCIATION



Gulfport-Biloxi-Pascagoula, Mississippi MSA

<p>Bay St Louis Branch 800 Hwy 90 Bay St. Louis, MS 39521 Hancock County Census Tract 301, Moderate</p>	<p>Gulfport O'Neal Rd Branch 15513 O'Neal Road Gulfport, MS 39503 Harrison County Census Tract 32.05, Middle</p>
<p>Diamondhead Branch 4402 Kalani Drive Diamondhead, MS 39525 Hancock County Census Tract 305, Upper</p>	<p>Long Beach Branch 198 Klondyke Road Long Beach, MS 39560 Harrison County Census Tract 27, Middle</p>
<p>Biloxi Branch 2605 Pass Road Biloxi, MS 39531 Harrison County Census Tract 12.02, Middle</p>	<p>Ocean Springs Branch 1517 Bienville Blvd Ocean Springs, MS 39564 Jackson County Census Tract 405, Upper</p>
<p>Gulfport Downtown Branch 1300 25th Avenue Gulfport, MS 39501 Harrison County Census Tract 38, Moderate</p>	<p>Pascagoula Branch 1126 Jackson Avenue Pascagoula, MS 39567 Jackson County Census Tract 429, Middle</p>
<p>Gulfport Hardy Court Branch 573 Courthouse Road Gulfport, MS 39507 Harrison County Census Tract 17, Moderate</p>	<p>Wiggins Branch 124 N. Border Avenue Wiggins, MS 39577 Stone County Census Tract 201, Middle</p>
<p>Gulfport Motorbank Branch 1822 25th Avenue Gulfport, MS 39501 Harrison County Census Tract 20, Moderate</p>	

Stone County	
Census Tract	Income Level
201	Middle
202.01	Upper
202.02	Middle

Hancock County	
Census Tract	Income Level
301	Moderate
302	Middle
303	Middle
304	Moderate
305	Upper
306.01	Middle
306.02	Middle
9900	Unknown

Jackson County	
Census Tract	Income Level
401.01	Upper
401.02	Middle
402.01	Middle
402.03	Middle
402.04	Middle
403	Middle
404	Middle
405	Upper
406	Middle
407	Upper
408	Middle
409	Upper
410	Middle
411	Middle

Jackson County	
Census Tract	Income Level
413	Middle
414	Middle
415	Low
416	Moderate
417	Moderate
418	Moderate
419	Moderate
420	Moderate
421	Middle
422	Middle
425	Moderate
426	Upper
427	Moderate
429	Middle
9900	Unknown



Gulfport-Biloxi-Pascagoula, Mississippi MS

Harrison County	
Census Tract	Income Level
1	Middle
3	Moderate
6	Upper
9	Middle
12.01	Middle
12.02	Middle
13	Middle
14	Middle
15.01	Middle
15.02	Middle
16	Upper
17	Moderate
18	Moderate
19	Middle
20	Moderate

Harrison County	
Census Tract	Income Level
23	Moderate
24	Low
25	Moderate
26	Low
27	Middle
28	Middle
29	Upper
30	Middle
31.01	Middle
31.02	Upper
32.04	Moderate
32.05	Middle
32.06	Upper
32.07	Middle
32.08	Moderate

Harrison County	
Census Tract	Income Level
33.01	Middle
33.03	Middle
33.04	Upper
34.02	Upper
34.03	Upper
34.04	Middle
35.01	Middle
35.02	Middle
35.04	Middle
35.05	Middle
36	Low
37	Middle
38	Moderate
39	Middle
9800, 9900	Unknown